

# COMMERCIAL RIBBED CS20, CS24, CS26



## COLORS



Printed colors may not be accurate. Contact your Midland dealer for exact color samples  
\*Only available in CS24



## STEEL EMBOSSING



\*Woodgrain embossing only available in CS24

## PANEL DESIGN



SPECIFICATIONS	CS20	CS24	CS26
Plain Steel U-Factor	Unrated	Unrated	Unrated
<b>U-Factor</b> R-Value: T-Bond:	<b>0.38</b> 7.05 	<b>0.38</b> 7.05 	<b>0.38</b> 7.05 
Thickness	2 inches	2 inches	2 inches
Maximum Width	40 ft 2 in	24 ft 2 in	16 ft 2 in
Exterior Steel	20 gauge	24 gauge	26 gauge
Warranty* <i>Excludes Springs</i>	10 years	10 years	25 years

\*For full warranty details contact your Midland dealer



## WINDOWS

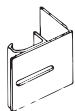


24" x 5"



24" x 12"

## TRACK MOUNTING



**Reverse Angle Mounted Track**  
Continuous leg-in angle to attach to steel jambs

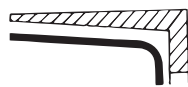


**Angle Mounted Track**  
Continuous leg-out angle used on larger doors to attach to wood jambs

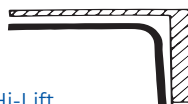
## TRACK CONFIGURATIONS



**Standard Lift**  
For normal installations



**Inclined Track**  
To follow pitch of roof



**Hi-Lift**  
To put horizontal track as close to ceiling as possible

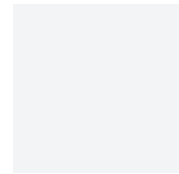


**Vertical Lift**  
Full vertical rise where headroom is available



**Low Headroom**  
For low-clearance installations

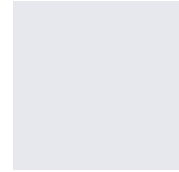
## GLASS



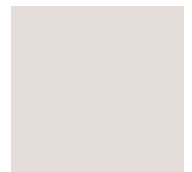
Plain



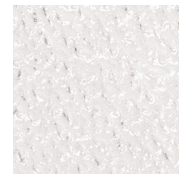
Bronze



Satin\*



Low E



Obscure



Double Dark\*



Gray

\*Tempered only.

## PACKAGE UPGRADES

Heavy-Duty Hardware Package available