



At Midland, we're proud to make the strongest, longest-lasting commercial overhead doors in the industry, and our ThermoGuard doors are the best of the best. Our ThermoGuard doors are manufactured to deliver the industries highest fill rates of polyurethane for an exceptional R-value of up to R-26.

We maintain our reputation for uncompromising quality and strength. We use heavy-duty 27- or 20-gauge steel on the exterior of our ThermoGuard doors and 27-gauge steel for the interior panel. Our quality doesn't end there. The hot-dipped galvanized panels move seamlessly on the heavy-duty, angle-mount galvanized steel track.

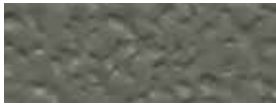
THE TECHNOLOGY & STRENGTH OF YOUR THERMOGUARD™ DOOR

Midland's Commercial doors feature embossed pebble-grain exteriors and are available with color and window options to complement any building's exterior. All Midland commercial doors feature heavy-duty galvanized steel tracks and hardware.

CHOOSE YOUR COLOR



White



Tera-Bronze



Almond



Green



Sandtone



Coffee



Consult your Midland dealer for custom color options. Due to the printing process, the colors in this brochure may not be exact; contact your Midland dealer for accurate colors.

ADD WINDOWS



24x7 Plain

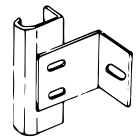


32x14 Plain*
*Only available in 3"

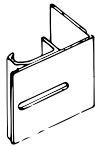


24x12 Plain

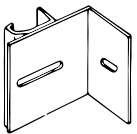
TRACK MOUNTING DETAILS



Bracket Mounted Track
To attach to wood jambs



Reverse Angle Mounted Track
Continuous leg-in angle to attach to steel jambs



Angle Mounted Track
Continuous leg-out angle used on larger doors to attach to wood jambs

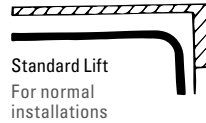
SPECIFICATIONS

	2" ThermoGuard	3" ThermoGuard
Foam/Insulate	Polyurethane	Polyurethane
R-Value	18.0	26.0
Thickness	2 inches	3 inches
Maximum Width	32 feet 2 inches	40 feet 2 inches
Exterior Steel	27 gauge optional 20-gauge upgrade available in white only	27 gauge optional 20-gauge upgrade available in white only
Interior Steel	27 gauge	27 gauge
Warranty* Excludes Springs	10 years	10 years

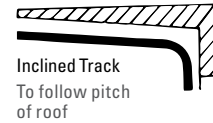


*For full warranty details contact your Midland dealer.

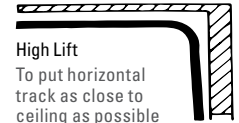
TRACK CONFIGURATIONS



Standard Lift
For normal installations



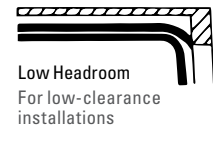
Inclined Track
To follow pitch of roof



High Lift
To put horizontal track as close to ceiling as possible



Vertical Lift
Full vertical rise where headroom is available



Low Headroom
For low-clearance installations

For full commercial track space requirements contact your Midland dealer.



www.midlandgaragedoor.com

Information shown is based on specifications and features available at the time of printing and is subject to change without prior notice.

© 2018 Midland Garage Door Mfg. Co. Inc. All rights reserved.

0518