

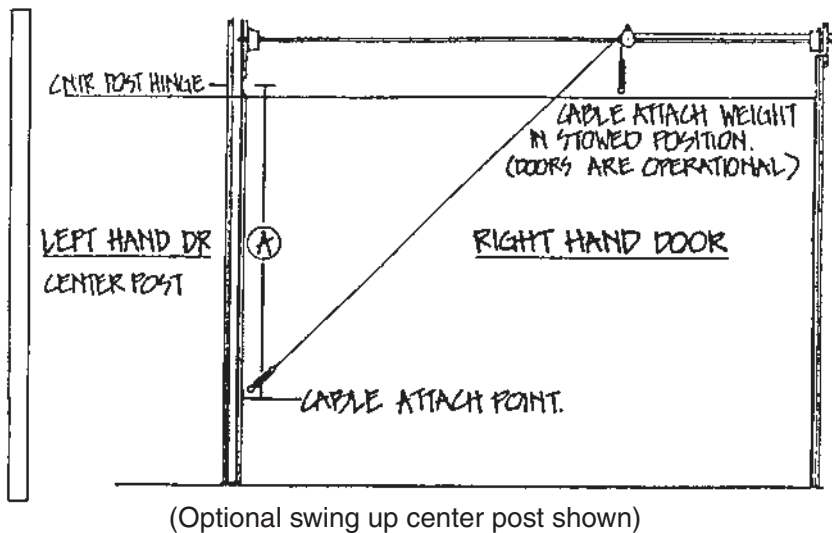
Architectural Specifications

INSULATION OPTIONS

(FOR CS-26, CS-24, CS-20 RIBBED AND CS-16 OR CS-20 FLUSH)

Description	'U'	'R'
With Polystyrene Core and Thermoplastic backup cover	0.143	7.0
With Polystyrene Core and 1/8" hardboard backup cover.	0.143	7.0
With Polystyrene Core and 26 ga. painted backup cover.	0.143	7.0
With Urethane Core and 26 ga. painted backup cover.	0.086	11.69
Note: Insulation / backcover options may change without notice		

Moveable Center Post Assembly Door



Additional Products:

Midland's swing up center post assembly is designed for use with two doors to increase the access opening. When doors are both opened the center post can be swung up out of the way. Swing up center post available with automatic safety interlock switches to prevent lowering of doors when posts are removed from opening. Doors operate normally when posts are latched into position. (consult factory)