

Architectural Specifications

Commercial Ribbed Doors (CS 26, CS 24 and CS 20 Ribbed)

Model: CS26 Ribbed CS24 Ribbed CS20 Ribbed

I. GENERAL

A. Work Included

The doors will be Model CS26, CS24 or CS20 sectional overhead type as manufactured by Midland Garage Door Mfg. Co.

B. Other Work

Related structure work, opening preparation, field painting and electrical work etc. falls into the responsibility of other trades.

II. PRODUCT

A. Sections

Sections will be 26, 24 or 20 ga. roll-formed, hot dipped, galvanized G60 (minimum) a yield strength of 33,000 psi, complying with ASTM A 653 and ASTM A 924, and will have a nominal thickness of 2". Doors will have tongue and groove meeting rails to form weathertight joints. Center and end stiles will be 16 ga. steel. Riveted and welded to the sections. End stiles will be channel-shaped to 2" deep. Various back covers available. Deflection of door in the horizontal position will not exceed 1/120 of the door width. (Consult factory for unusual requirements.) **Optional glass lites or full vision sections available.**

B. Insulation (Optional)*

Insulation will be composed of polystyrene providing insulation factors of 7.0 R-Value or urethane with R-Value of 11.69, complying with ASTM C 236.

*See insulation/option page 10

C. Hardware

Hinges and fixtures will be G60 galvanized steel complying with ASTM A 36 and ASTM A 123. Full floating ball-bearing rollers will have hardened steel races. Roller sizes will be adequate for design requirements and limitations.

D. Track

Track is 2" or 3" depending upon door size and requirements. Angle or bracket



Also available as Flush Exterior (Models CS20 Flush and CS16 Flush)

mounted depending upon door size and requirements.

E. Spring Counterbalance

Counterbalance shall be oil tempered, helical wound torsion springs mounted on a ball bearing cross header shaft engineered to comply with ANSI/DASMA 102-1996. Longer Life springs of 25,000, 50,000 or 100,000 cycles may be specified. Galvanized aircraft type lifting cables with minimum safety factor of 8 to 1 and cast aluminum drums are standard.

F. Lock

Lock will be interior mounted slide lock. (Optional keyed lock available.)

G. Weatherstrip

Bottom weatherstrip will be flexible U'd astragal secured with an extruded aluminum retainer which also provides additional reinforcement. Optional jamb weatherstrip packages available.

H. Finish

Paint will be baked-on polyester over epoxy primer. White or brown exterior. (CS-20 white only exterior)

I. Operation

Operation will be by manual pull rope. Optional chain hoist and electric operator are available.

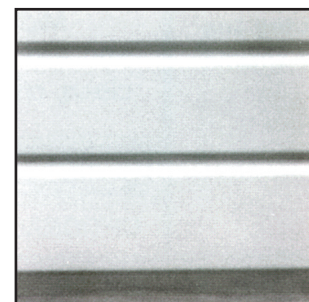
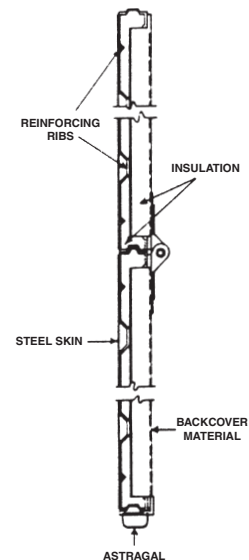
III. EXECUTION

Installation

Doors should be installed in compliance

with Midland Garage Door Mfg. Co. instructions by authorized Midland Garage Door Installation Professionals.

Cross Section



Ribbed Exterior Pebble
Texture Finish